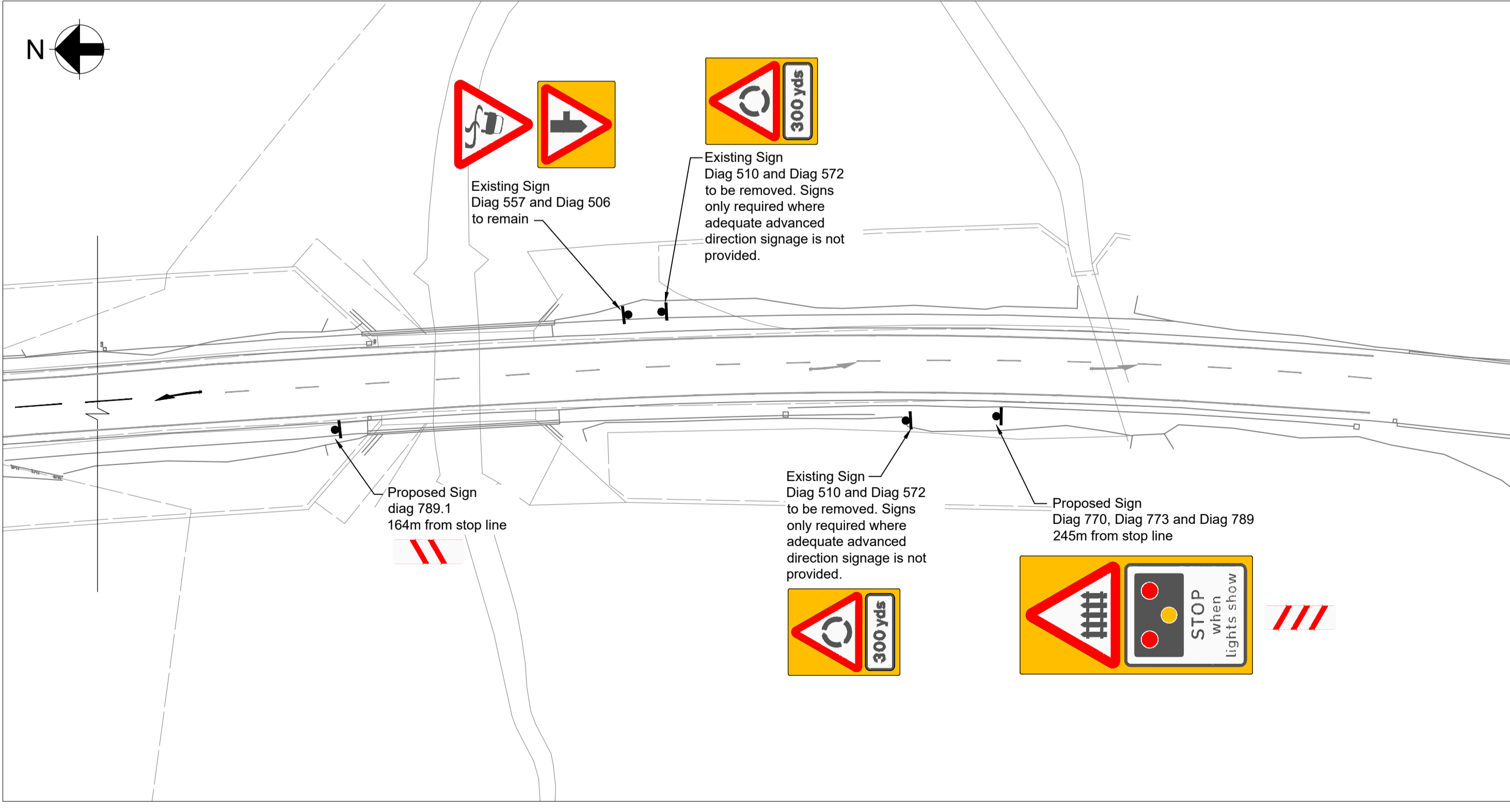
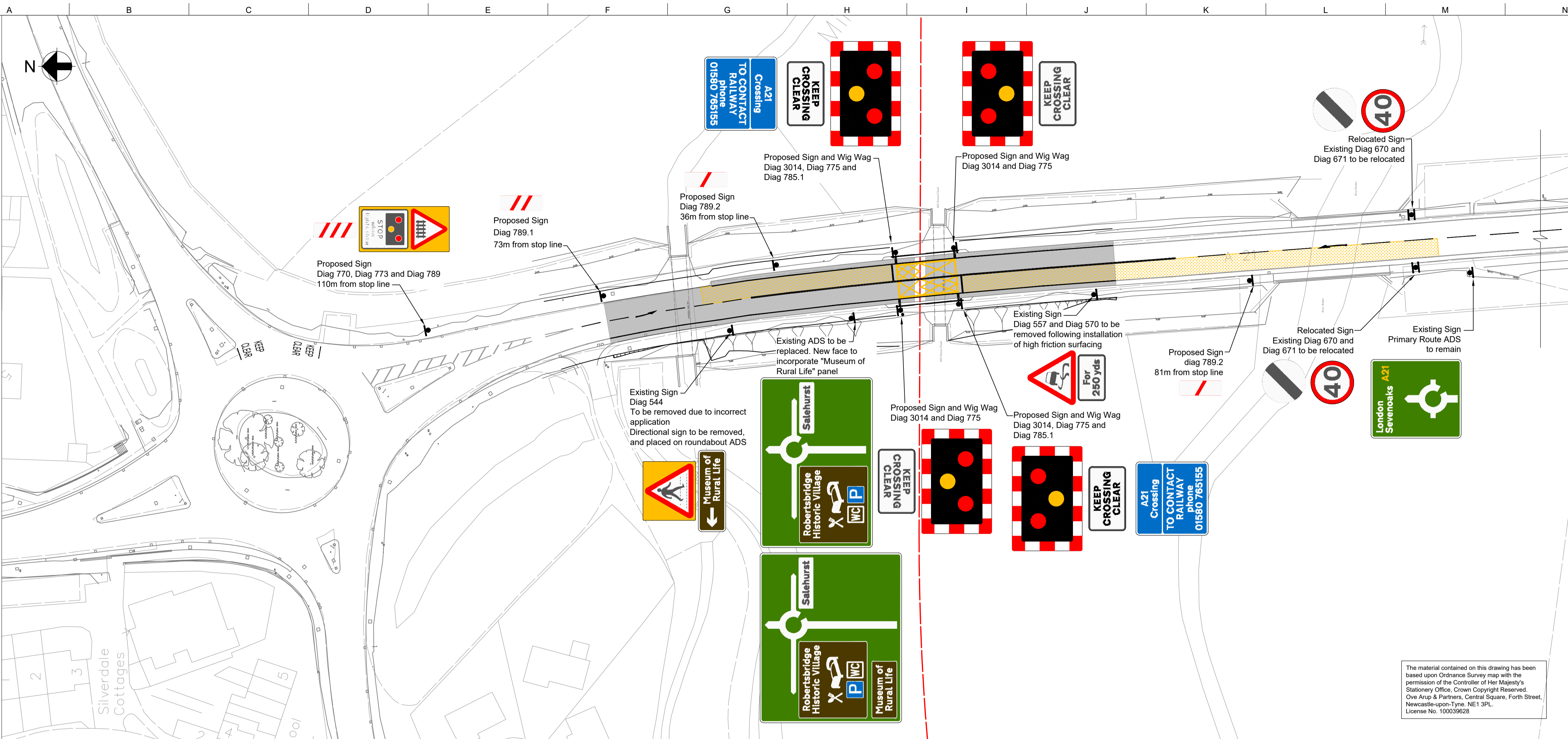


A1
1
2
3
4
5
6
7
8
9
10
11



- Notes**
- All road markings and traffic signs are to be in accordance with the Traffic Signs Regulations and General Directions (2002) and the Traffic Signs Manuals.
 - For diagram numbers refer to the TSRGD.
 - For road markings refer to drawing 239025-ARP-XX-XX-DR-CH-0002

The material contained on this drawing has been based upon Ordnance Survey map with the permission of the Controller of Her Majesty's Stationery Office. Crown Copyright Reserved. © Arup & Partners, Central Square, Forth Street, Newcastle-upon-Tyne, NE1 3PL. License No. 100039626

P1	11/12/20	ER	EK	JP
Supersedes C.950.G.104				
Rev	Date	By	Chkd	Appd

ARUP
 Central Square, Forth Street
 Newcastle upon Tyne NE1 3PL
 Tel +44 (0)191 261 6080 Fax +44 (0)191 261 7879
 www.arup.com

Client
Rother Valley Railway Limited

Project Title
**Rother Valley Railway
 Level Crossing Highway Design**

Drawing Title
**A21(T) Robertsbridge Bypass
 Traffic Signs**

Scale at A1	1:500
Role	Civils - Highways
Suitability	S2 - Suitable for Information
Arup Job No	239025
Name	239025-ARP-XX-XX-DR-CH-0003
Rev	P1